

32T-2 Triplex Plunger Pump

Specifications

Pump Size:

maximum plunger size x stroke length, in.(mm):
2.000 x 2.250 (50.8 x 57.15)

Rated BHP (kW) at 465 RPM: 32 (24)

Rated plunger load, pounds (kg): 3600 (1633)

Maximum discharge pressure: psi (kPa)

"L" model: 2037 (14046)

"M" model: 2565 (17685)

"H" model: 4600 (31716)

Crankshaft extension:

Diameter, in.(mm): 2.000 (50.8)

Length, in.(mm): 3.875 (98.4)

Keyway width x depth, in.(mm):

1/2 x 1/4 (12.7 x 6.35)

Maximum recommended sheave diameter,
in.(mm): 33.5 (850.9)

For larger sizes: **Contact Factory**

Oil Capacity, gallons (L)

Crankcase: 1-1/4 (4.73)

Weight, pump only on

wood shipping skids, pounds (kg): 395 (179)

Standard Materials for Fluid Ends:

"L" & "M" models

Cast Ductile Iron

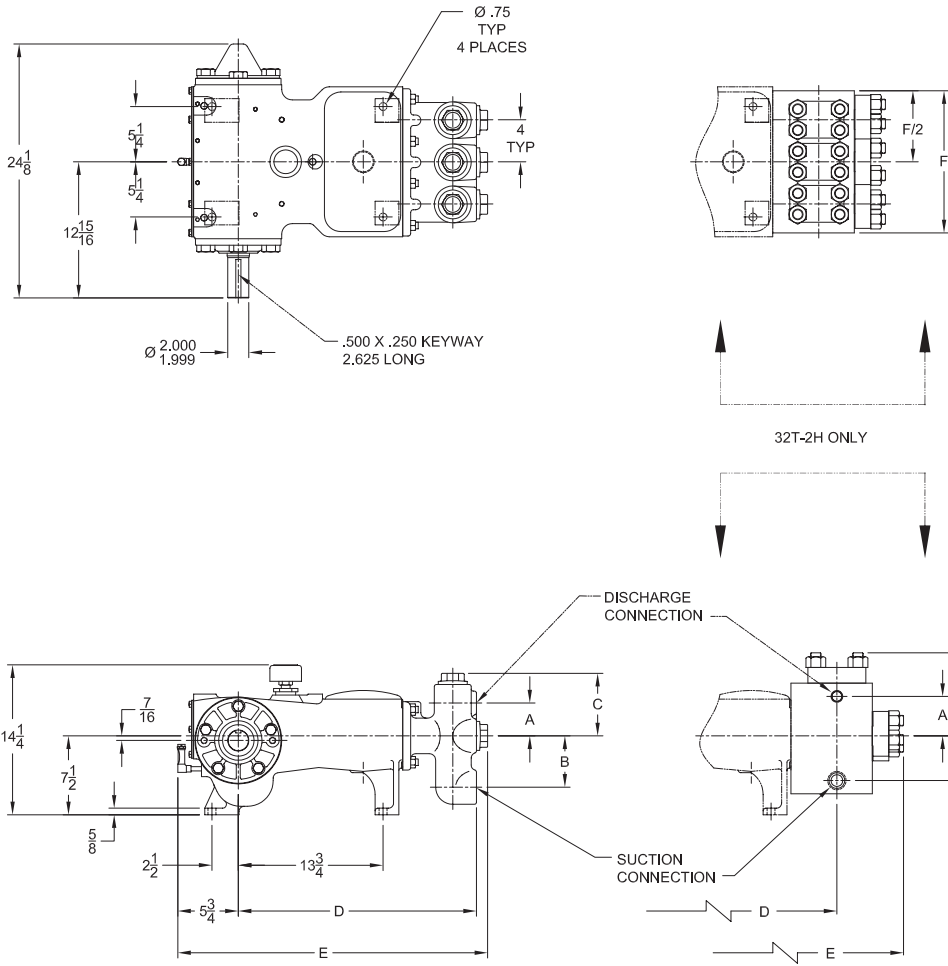
Cast Nickel-Aluminum-Bronze

Cast 316 Stainless Steel

Forged/Plate Carbon Steel

"H" model

Forged 15-5 Stainless Steel



Pump Model	Flange Connections		Dimensions (Inches)						
	Discharge Connection Sizes	Suction Connection Sizes	A	B	C	D	E	F	
32T-2L	1 (25.4)-11 1/2 NPT	2 (50.8)-11 1/2 NPT	3 3/8	4 7/8	5 15/16	22 5/8	29 1/2	11 1/2	
32T-2M	1 (25.4)-11 1/2 NPT	2 (50.8)-11 1/2 NPT	3 1/8	4 7/8	5 15/16	22 5/8	29 1/2	11 1/2	
32T-2H	3/4 (19.1)-14 NPT	1 1/4 (31.8)-11 1/2 NPT	3 3/4	4 1/4	7 7/8	20	32 1/8	13 1/2	

32T-2 Triplex Plunger Pump

Performance Data

PUMP	English Units					50 RPM		150 RPM		200 RPM		250 RPM		350 RPM		465 RPM	
	Plunger Dia. In.	Plunger Area Sq. In.	BPD per RPM	GPM per RPM	Max. Press. PSI	BPD	GPM	BPD	GPM	BPD	GPM	BPD	GPM	BPD	GPM	BPD	GPM
32T-2L (T225LS)	2.000	3.1416	3.1474	0.0918	1146	158	4.59	473	13.8	630	18.4	787	22.9	1102	32.1	1464	42.7
	1.875	2.7612	2.7663	0.0807	1304	139	4.03	415	12.1	554	16.1	692	20.2	969	28.2	1287	37.5
	1.750	2.4053	2.4097	0.0703	1497	121	3.51	362	10.5	482	14.1	603	17.6	844	24.6	1121	32.7
	1.625	2.0739	2.0778	0.0606	1736	104	3.03	312	9.1	416	12.1	520	15.2	728	21.2	967	28.2
	1.500	1.7671	1.7704	0.0516	2037	89	2.58	266	7.7	355	10.3	443	12.9	620	18.1	824	24.0
32T-2M (T225M)	1.750	2.4053	2.4097	0.0703	1497	121	3.51	362	10.5	482	14.1	603	17.6	844	24.6	1121	32.7
	1.625	2.0739	2.0778	0.0606	1736	104	3.03	312	9.09	416	12.1	520	15.2	728	21.2	967	28.2
	1.500	1.7671	1.7704	0.0516	2037	89	2.58	266	7.75	355	10.3	443	12.9	620	18.1	824	24.0
	1.375	1.4849	1.4876	0.0434	2424	75	2.17	224	6.51	298	8.68	372	10.8	521	15.2	692	20.2
	1.250	1.2272	1.2295	0.0359	2565	62	1.79	185	5.38	246	7.17	308	8.96	431	12.6	572	16.7
32T-2H (T225H)	1.000	0.7854	0.7869	0.0229	4584	40	1.15	119	3.44	158	4.59	197	5.74	276	8.03	366	10.7
	0.875	0.6013	0.6024	0.0176	4600	31	0.88	91	2.64	121	3.51	151	4.39	211	6.15	281	8.17
	0.750	0.4418	0.4426	0.0129	4600	23	0.65	67	1.94	89	2.58	111	3.23	155	4.52	206	6.00
Brake Horsepower Required						3.4		10.2		13.6		17		24		32	

PUMP	Metric Units					50 RPM		150 RPM		200 RPM		250 RPM		350 RPM		465 RPM	
	Plunger Dia. cm	Plunger Area cm ²	M ³ /Hr per RPM	L/Sec. per RPM	Max. Press. kPa	M ³ /Hr	L/Sec.	M ³ /Hr	L/Sec.	M ³ /Hr	L/Sec.	M ³ /Hr	L/Sec.	M ³ /Hr	L/Sec.	M ³ /Hr	L/Sec.
32T-2L (T225LS)	51	20.268	0.0208	0.0058	7901	1.04	0.29	3.13	0.87	4.17	1.16	5.21	1.45	7.30	2.03	9.69	2.69
	48	17.814	0.0183	0.0051	8989	0.92	0.25	2.75	0.76	3.66	1.02	4.58	1.27	6.41	1.78	8.52	2.37
	44	15.518	0.0160	0.0044	10319	0.80	0.22	2.39	0.67	3.19	0.89	3.99	1.11	5.59	1.55	7.42	2.06
	41	13.380	0.0138	0.0038	11968	0.69	0.19	2.06	0.57	2.75	0.76	3.44	0.96	4.82	1.34	6.40	1.78
32T-2M (T225M)	38	11.401	0.0117	0.0033	14046	0.59	0.16	1.76	0.49	2.35	0.65	2.93	0.81	4.10	1.14	5.45	1.51
	44	15.518	0.0160	0.0044	10319	0.80	0.22	2.39	0.67	3.19	0.89	3.99	1.11	5.59	1.55	7.42	2.06
	41	13.380	0.0138	0.0038	11968	0.69	0.19	2.06	0.57	2.75	0.76	3.44	0.96	4.82	1.34	6.40	1.78
	38	11.401	0.0117	0.0033	14046	0.59	0.16	1.76	0.49	2.35	0.65	2.93	0.81	4.10	1.14	5.45	1.51
	35	9.580	0.0099	0.0027	16716	0.49	0.14	1.48	0.41	1.97	0.55	2.46	0.68	3.45	0.96	4.58	1.27
32T-2H (T225H)	32	7.917	0.0081	0.0023	17685	0.41	0.11	1.22	0.34	1.63	0.45	2.04	0.57	2.85	0.79	3.79	1.05
	29	6.413	0.0066	0.0018	17685	0.33	0.09	0.99	0.27	1.32	0.37	1.65	0.46	2.31	0.64	3.07	0.85
	25	5.067	0.0052	0.0014	31603	0.26	0.07	0.78	0.22	1.04	0.29	1.30	0.36	1.82	0.51	2.42	0.67
	22	3.879	0.0040	0.0011	31716	0.20	0.06	0.60	0.17	0.80	0.22	1.00	0.28	1.40	0.39	1.86	0.52
	19	2.850	0.0029	0.0008	31716	0.15	0.04	0.44	0.12	0.59	0.16	0.73	0.20	1.03	0.29	1.36	0.38
Kilowatts Required						2.5		7.6		10.2		12.7		18		24	

For operation below 75 RPM, an auxiliary lubrication system is required.

Volumetric Rate is based on 100% Volumetric Efficiency. Brake Horsepower/Kilowatts Required is based on 90% Mechanical Efficiency.

The information and data on this sheet is accurate to the best of our knowledge and belief, but are intended for general information only. Applications suggested for the materials are described only to help readers make their own evaluations and decisions, and are neither guarantees nor to be construed as express or implied warranties of suitability for these or other applications. National Oilwell makes no warranty either express or implied beyond that stipulated in National Oilwell Standard Terms and Conditions of Sale.

Authorized Distributor:



www.nov.com • mission.sales@nov.com
 10000 Richmond, Houston, Texas 77042
 (713)346-7500 (phone) • (713)346-7366 (fax)